



SPECIAL OFFER

RUN TIME Parts and Service N-5 and N-8 Summer Rebuild Kit Discounts

10% off parts Despite the frigid temperatures, spring is approaching and that means it's time for Evergreen Packaging's annual Summer Rebuild Kit sale. For a limited time, get selected N-5 and N-8 kits direct from Evergreen Packaging for 10% off the list price. These are the kits you need most to complete those important filler rebuild projects during the upcoming summer months. Order now to ensure timely delivery and to take advantage of these special prices good through May 31, 2015.

Turn to page 2 for the kit list, pricing and quantity of kits required for each filler.

Service Discount for PMSA Customers Only As an added incentive to take advantage of these kit discounts, Evergreen Packaging Field Service will waive the hourly travel charges and company car mileage charges to and from your facility if at least one of these kits is installed by an Evergreen Packaging Service Technician during the visit. Other service work may be performed during the same visit when the kit is installed.

Note: All other travel expenses such as airline tickets, hotels and rental cars will be charged at actual or existing published prices.

The free travel offer will begin on June 1 and continue through August 31. To schedule Evergreen Packaging Service, call 800-331-6083. Please remember not to schedule service until you have received a confirmed date for parts delivery.

This parts and service offer is valid only for PMSA customers located in North America.



Cont on page 2

IN THIS ISSUE

1
Special Offer:
N-5 & N-8 Rebuild
Kit Discounts

2
N-5 & N-8 Rebuild
Kit List & Pricing

3
Service Tip: New
N-8 Boot
Supports

3
Training Schedule

4
Service Tip: New
N-8 Top Re-folder



Cont from page 1

N-5 & N-8 Summer Rebuild Kit Discounts

Material	Description	Current list price	10% discount price	Product line	Kits per machine
EP3057396	Infeed Drive Pivot Arm Bushings and Washers	285.60	257.04	N-5	1
EP3057591	Conveyor Wear Strips SN 475 - 2108	10,200.00	9,180.00	N-5	1
EP3057592	Conveyor Wear Strips SN 2109 & up	3,307.00	2,976.30	N-5	1
EP3057950	No Carton No Fill Air Cylinder	270.30	243.27	N-5	2
EP3057951	No Carton No Fill Air Cylinder (Rubber Goods Only)	34.20	30.78	N-5	2
EP3057998	Upper Fill Rebuild	413.10	371.79	N-5	2
EP3058120	Constant Rotation Shaft Rebuild 4 Fill Station	3,239.00	2,915.10	N-5	1
EP3058121	Constant Rotation Shaft Rebuild 2 Fill Station	2,341.00	2,106.90	N-5	2
EP3058141	Sealer/Dater Rebuild PM SS 1 Round Pin Hole	28,870.00	25,983.00	N-5	1
EP3058142	Sealer/Dater Rebuild PM SS 6 Round Pin Hole	30,620.00	27,558.00	N-5	1
EP3058143	Sealer/Dater Rebuild PM SS 1 Round Pin Hole/Pcs	31,170.00	28,053.00	N-5	1
EP3058144	Sealer/Dater Rebuild PM SS Slot/Slug Hole	30,890.00	27,801.00	N-5	1
EP3058175	Water Cooled Guide Rails	7,089.00	6,380.10	N-5	1
EP3058305	Top Seal Rebuild N SPM 1 Hole	28,600.00	25,740.00	N-5	1
EP3058306	Top Seal Rebuild N SPM 6 Hole	30,400.00	27,360.00	N-5	1
EP3058307	Top Seal Rebuild N SPM Plant Code Slug / 1 Hole	30,730.00	27,657.00	N-5	1
EP3058308	Top Seal Rebuild N SPM Plant Code Slug / Slot	30,660.00	27,594.00	N-5	1
EP3058337	Top Seal Rebuild N SHC w/o Jaws	12,820.00	11,538.00	N-5	1
EP3058342	Top Seal Rebuild N SHC Slot	18,900.00	17,010.00	N-5	1
EP3058344	Water Cooled Guide Rails	4,820.00	4,338.00	N-5	1
EP3115578	Conveyor Chains SN 475 - 2108	20,880.00	18,792.00	N-5	1
EP3115579	Conveyor Chains SN 2109 & up	14,520.00	13,068.00	N-5	1
EP3058405	N8 Lower Fill Kit (Minor Rebuild)	8,320.00	7,488.00	N-8	1
EP3058406	Constant Rotation Shaft Kit	682.00	613.80	N-8	1
EP3058506	Lower Fill Kit (Major Rebuild)	5,700.00	5,130.00	N-8	1
EP3058507	Outfeed Rebuild Kit	1,309.00	1,178.10	N-8	1
EP3058508	Top Breaker Rebuild Kit	2,559.00	2,303.10	N-8	1
EP3058539	Bottom Seal Rebuild Kit	3,009.00	2,708.10	N-8	1
EP3058540	Top Seal Rebuild Kit	5,020.00	4,518.00	N-8	1
EP3058543	Infeed Rebuild Kit - SN 1525 - 1533	8,790.00	7,911.00	N-8	1
EP3058544	Infeed Rebuild Kit - SN 1534 - 1670	9,490.00	8,541.00	N-8	1
EP3058545	Infeed Rebuild Kit - SN 1671 & up	9,760.00	8,784.00	N-8	1
EP3058547	Top Seal Kit w New Cylinder - 4 Lines	6,700.00	6,030.00	N-8	1
EP3058548	Bottom Folder and Drive Kit	1,398.00	1,258.20	N-8	1
EP3058556	Lower Fill Kit (Major Rebuild)	10,770.00	9,693.00	N-8	1
EP3058557	Bottom Folder Kit (Major Rebuild)	12,880.00	11,592.00	N-8	1
EP3115969	Conveyor Chain Kit - SN 1525 & up	36,520.00	32,868.00	N-8	1
EP3115970	Conveyor Chain Wear Strip Kit	7,260.00	6,534.00	N-8	1
EP7262721	Top Squeezer Spring Kit	2,943.00	2,648.70	N-8	1
EP7264042	Top Seal w New Air Cylinder Kit	2,670.00	2,403.00	N-8	4
EP7264043	Top Seal w Air Cylinder Repair Kit	828.00	745.20	N-8	4
EP7264044	Top Seal w/o Air Cylinder or Rebuild Kit	639.00	575.10	N-8	4



The *Run Time* is the newsletter of the Evergreen Packaging Equipment Sales Services Department. Its purpose is to provide customers with Evergreen Packaging gable top parts and service information.

Editor: Sheri Albrecht
 sheri.albrecht@everpack.com
 Phone: 319-399-3481
 or 800-553-5981
 Fax: 319-399-3388
 or 800-553-5986
 Evergreen Packaging Equipment
 PO Box 3000
 2400 Sixth Street SW
 Cedar Rapids IA 52406
 We welcome comments and suggestions.
 Please send all mailing address changes to the editor.

Evergreen Packaging Equipment is proud to be ISO 9001:2008 certified.

QUALITY POLICY

As employees, we will perform our jobs in conformance to customer and industry requirements with a commitment to doing it right the first time. We will manufacture and deliver on time, defect-free products and services to our customers.

We are dedicated to quality and continuous improvement.

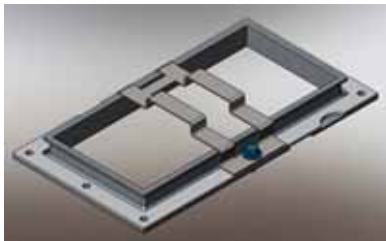
SERVICE TIP

Support Ribs Prevent Boot Sag, Fluid Collection on Older N-8 Fillers

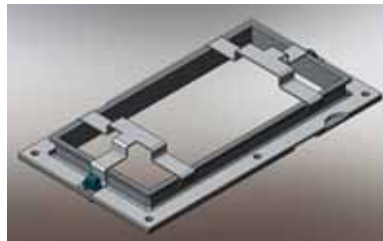
As an N-8 machine ages, the top squeezer rubber boots can start to sag. This is due to the neoprene rubber being exposed to harsh cleaning chemicals over many years. When they sag, it is possible for water, product or cleaning solution to collect on top of the boots. To prevent the sagging, Evergreen is now offering support ribs to retrofit onto older N-8s. These support ribs come standard on all new N-8s.

A single center support rib piece (PN 3494170) is needed for one side of the filler. For the other side, two individual outside support ribs are needed (PN 3494149).

The ribs install using existing holes and hardware. They help to prop up the boot, keeping the top in a convex shape and preventing liquid from accumulating.



Boot Center Support, PN 3494170



Boot Support, PN 3494149 (2)

TRAINING SCHEDULE

Get More Run Time With Evergreen Training, In Our Plant or Yours

Let trainer Dennis Meagher show you how to keep your Evergreen Packaging filler properly maintained for top performance and long life.

All scheduled training classes at Evergreen's Cedar Rapids facility are full. But Dennis will come to you to train your personnel on your own filling machine in your own plant. Also ask about in-plant

training using our N-8 fill system or Spout-Pak® training stands.

Don't wait to schedule training for your facility. Contact Dennis at 800-331-6083 X584 or dennis.meagher@everpack.com. For the most up-to-date training school information, look online at evergreenpackaging.com.



EVERGREEN PACKAGING is a global leader in beverage packaging systems, serving the dairy, juice, specialty, and other liquid food markets. The Evergreen Packaging business employs nearly 4,100 people worldwide. Besides the North American facilities, Evergreen Packaging includes wholly owned subsidiaries in China, South Korea and Taiwan, and joint ventures in Israel, Latin America, North Africa and Saudi Arabia.

Evergreen Packaging is owned by Reynolds Group Holdings Ltd, an investment company that also owns Reynolds Packaging, Pactiv Corporation, Closure Systems International and Graham Packaging.

The Evergreen Packaging product line includes:

- Gable top packaging equipment—which forms, fills, and seals paper gable top cartons—available for pasteurized, ESL (Extended Shelf Life), ELL (Extended Long Life), and hot fill applications. These machines fill cartons from 4 oz. up to half-gallon (150 ml up to 2 liter), at speeds from 30 to 340 cartons per minute.
- SPOUT-PAK® twist-off closures for most gable top cartons.
- Gable top materials available through our global network of converting plants.

SERVICE TIP

New N-8 Top Re-folder Reduces Poly and Product Buildup

Just before cartons enter the top heater on the N-8 filler, there is a device called the top re-folder. It presses the sides of the cartons inward to make sure they fold the correct way while in the top squeezer.

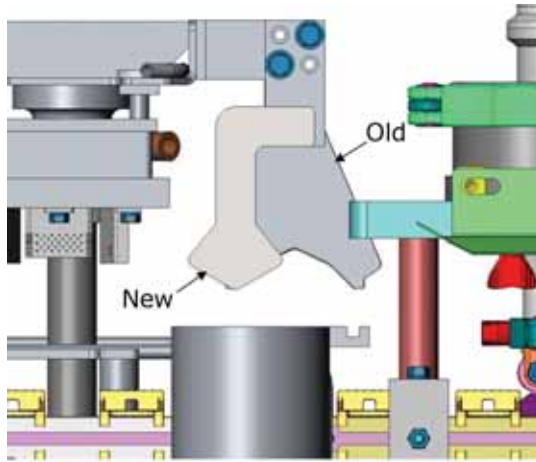
An issue that some customers encounter is polyethylene transferring off the carton onto the top re-folder. It builds up until it is necessary for the operator to stop the machine occasionally to clean it off.

Another possible issue is foamy product splashing up while the carton is being re-folded and, again, building up on the re-folder blade.

Evergreen has created a new kit, PN 3058696, to help alleviate these issues. The modified shape of the re-folder blade situated to the side of the carton means less polyethylene is transferred, and any product foam that splashes up will not collect on the re-folder blade.

This kit is a drop-in replacement that does not require any special modifications to the filler.

*- Jim Goranson
Engineer,
N-8 Process Center Owner*



Every part you purchase from EVERGREEN PACKAGING EQUIPMENT is backed by our:

- Commitment to quality.
- Technical Service Team (TST) of engineers to answer your questions.
- Team of knowledgeable sales coordinators to make sure you get the part you need, when you need it.
- Emergency parts and service availability 24 hours a day, 7 days a week.
- Experienced field service technicians available to maintain your filler in peak operational condition.
- Six-month warranty.

TO ORDER PARTS:

Email: evergreenparts@everpack.com
Phone: 319-399-3399 or 800-553-5981
Fax: 319-399-3388 or 800-553-5986

TO REQUEST SERVICE:

Phone: 319-399-3570 or 800-331-6083
Fax: 319-399-3366

FOR TECHNICAL SUPPORT:

Phone: 319-399-3300

ANNOUNCEMENT

The Evergreen Packaging facility will be closed on April 3 for the Easter holiday. On that day, we will ship parts and schedule service on an emergency basis only.

Happy holiday!

Overstocked Filler Parts



*"Make sure you check my parts lists BEFORE you order!"
Look for Craig Stephenson's periodic faxes and e-mails listing super-discounted prices on surplus stock. Craig's lists are now also online at evergreenpackaging.com.*

Contact Craig at 800-553-5981 or craig.stephenson@everpack.com.